

## SEL AND MENTAL HEALTH

# Rapid Assessment and Action Planning

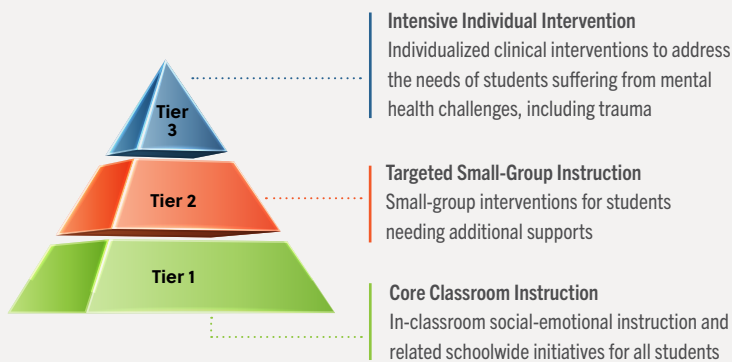
*An innovative, data-driven solution to address school districts' SEL and mental health needs*



COVID-19 and ongoing racial inequities are creating a new wave of stress, fear, and trauma for students, parents, and educators. One way for districts to address these challenges is by implementing equitable and effective systems of social and emotional learning (SEL) and mental health supports. EDC's Rapid Assessment and Action Planning (RAAP) solution can help you do this.

## OUR PHILOSOPHY

EDC has decades of experience helping districts promote students' social and emotional well-being using research-informed and culturally responsive interventions. Our approach is guided by a multi-tier framework:



Effective multi-tiered SEL and mental health support systems work best when districts have the following **drivers of effectiveness** in place:

- ✓ Commitment and vision from **leadership**
- ✓ **Data-driven** decision-making
- ✓ **Effective implementation** of all programs, practices, and policies
- ✓ Focus on **equitable** and **cultural responsive** supports
- ✓ Efficient **communication** and **coordination** across buildings and sectors



## What Can RAAP Do for Your District?

Using RAAP, we will first work with you to assess your current SEL and mental health needs using current data sources and providing our support with additional data collection. We will then work with you to develop an ambitious and manageable action plan.

### Assessment covers the following:

- Systemwide strengths, gaps, needs, and opportunities
- Students' and educators' SEL and mental health needs
- Effectiveness and fit of existing SEL and mental health programs, practices, and policies
- Current capacity to put in place the above drivers of effectiveness

### Action plan includes:

- Short-, mid-, and long-term action steps
- Clearly defined roles and responsibilities
- Specific milestones and benchmarks
- Outcomes of success

## What's in RAAP?



Two virtual trainings for district SEL and mental health teams that build local capacity to carry out assessment and action planning



Self-assessment tool and other carefully curated resources to support RAAP



Virtual technical assistance and coaching from our expert staff



Final report authored by our subject matter experts that presents assessment results, articulates district priorities, and outlines action steps

### About EDC

**Education Development Center (EDC)** is a global nonprofit that advances lasting solutions to improve education, promote health, and expand economic opportunity. We have decades of experience helping districts promote students' social and emotional well-being through research-informed and culturally responsive interventions. RAAP builds on this experience, which includes the following exemplary initiatives:

**SEL & Mental Health Academy:** EDC is providing school districts across Massachusetts with intensive professional development, including in-person trainings, customized consultations, and user-friendly SEL and mental health resources on topics that include COVID-19.

**UPTAKE:** EDC is working with 10 districts in Indiana (over 120,000 students) to support evidence-based program selection, program implementation and monitoring, and district system change.

**Cross-State Collaborative to Support Schools in the Opioid Crisis:** Through a partnership with SRI International and with funding from the U.S. Department of Education, EDC is working with state education agencies, districts, and researchers from Appalachia to develop tools and resources to support schools addressing student trauma and COVID-19 school closures and re-openings.



edc.org

FOR MORE INFORMATION: Contact Shai Fuxman, EdD,  
sfuxman@edc.org | 617-618-2406  
edc.org/sel-mental-health